

Doris Deutmeyer - Instructor



FUSED RAW EDGE APPLIQUE LANDSCAPE

- * NO SEWING MACHINES REQUIRED!
- * Each participant must purchase a kit. Supply lists are available.
- * Kits include pattern, handouts, fabric, and HeatnBond iron-on adhesive.

Sunset Pine - Introduction to Fused Raw Edge Applique

3 hours/\$30 kit



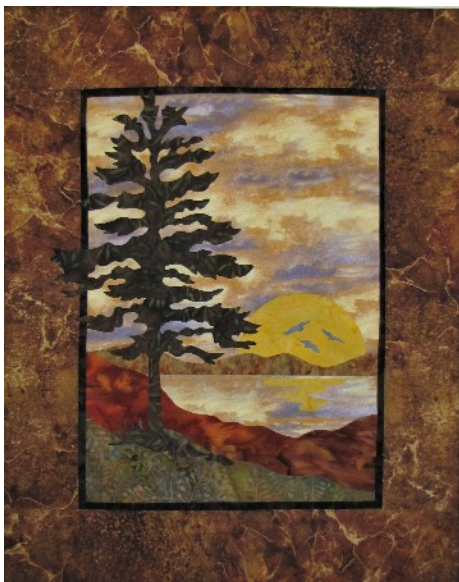
Finished size 11" x 15"

Skill Level: Confident beginner

In this informative hands-on technique class you will learn the fundamentals of raw edge applique; how to use iron-on adhesives; and tools for success. Doris will demonstrate methods of completing and displaying your landscape with handouts to take home. You will complete "Sunset Pine" in your choice of Autumn or Spring colorations.

Sunset Pine - Raw Edge Applique Landscape/Fused Borders

5 hours/\$35 kit



Mounted on 16" x 20" artist canvas

Skill level: Confident beginner

In this hands-on technique class you will add fused borders to your completed raw edge applique landscape. Several methods of completing and displaying your landscape will be presented with handouts to take home. You will complete "Sunset Pine" with fused borders in your choice of Autumn or Spring colorations.



Sunset Pine - Introduction to Fused Raw Edge Applique

3 hours

In this an informative hands-on technique class you will learn the fundamentals of fused raw edge applique; how to use iron-on adhesives; and tools for success. Doris will demonstrate methods of completing and displaying your landscape with handouts to take home. Complete "Sunset Pine" in your choice of Autumn or Spring. Size 11" x 15"



Autumn

Spring



Skill Level: Confident beginner

Kit \$30 (Each participant must purchase a kit)

Kit Includes: Pattern, handouts, fabric, HeatnBond

Supplies to Bring

NO SEWING MACHINE REQUIRED!

- * Heat resistant, transparent pressing sheet
13" x 17" (or larger) Applique Pressing Sheet™ Bear Creek (recommended)
- * Small fabric scissors - Fiskars 5" Spring Assist Micro-tip (recommended)
- * Regular fabric scissors and paper scissors
- * Sharp #2 pencil w/eraser
- * White marking pencil for cardinal and black Pigma Micron for chickadee
- * Paper bag for scraps

NOTE: I will have limited number of these notions available for purchase during workshop.

13" x 17" Applique Pressing sheet - \$16

18" x 20" Applique Pressing sheet - \$22

Fiscars Micro tip scissors \$17

Room Set Up

Instructor will need 2 tables for demonstrations, sales and samples

Participants will need ample space; **minimum 24" x 48"**

One iron station per 3 - 4 participants - full size irons PLEASE: NO travel irons, NO steam

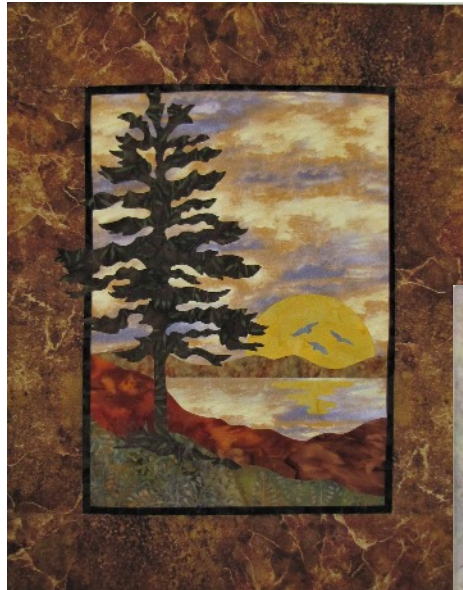
2 cutting stations with 18" x 20" rotary mat, ruler and rotary cutter



Sunset Pine - Fused Raw Edge Applique / Fused Borders

5 hours

In this hands-on technique class you will add fused borders to your completed fused raw edge applique landscape. Several methods of completing and displaying your landscape will be presented with handouts to take home. Complete "Sunset Pine" with fused borders in your choice of Autumn or Spring colorations.



Autumn

Spring



Skill Level: Confident Beginner

Mounted on a 16" x 20" artist canvas (optional)

Kit \$35 (Each participant must purchase a kit)

Kit Includes: Pattern, handouts, fabric, HeatnBond

Supplies to Bring

NO SEWING MACHINE REQUIRED!

- * Heat resistant, transparent pressing sheet
18" x 20" Applique Pressing Sheet TM Bear Creek (recommended)
- * Small fabric scissors - Fiskars 5" Spring Assist Micro-tip (recommended)
- * Regular fabric scissors and paper scissors
- * Sharp #2 pencil w/eraser
- * Paper bag for scraps
- * 18" x 24" cutting mat, ruler, 45 mm rotary cutter (two participants may want to share)
- * Decorative rotary blade: pinking, wave OR scallop recommended - regular blade will work
Make sure your blade is SHARP!

NOTE: I will have limited number of these notions available for purchase during workshop.

18" x 20" Applique Pressing sheet - \$22

Fiscars Micro tip scissors \$17

Copic Marker Set of 3 - \$16.50 (optional)

Decorative rotary cutter blades for Olfa 45 mm cutter, Scallop, Wave and Pinking - \$12 each (optional)

Room Set Up

Instructor will need 2 tables for demonstrations, sales and samples

Participants will need ample space; **minimum 24" x 48"**

One iron station per 2 - 3 participants - full size irons PLEASE: NO travel irons, NO steam