

## FUSED RAW EDGE APPLIQUE LANDSCAPE

- \* NO SEWING MACHINES REQUIRED!
- \* Each participant must purchase a kit. Supply lists are available.
- \* Kits include pattern, handouts, fabric, and HeatnBond iron-on adhesive.

### Sunset Pine - Introduction to Fused Raw Edge Applique

**3 hours/\$30 kit**



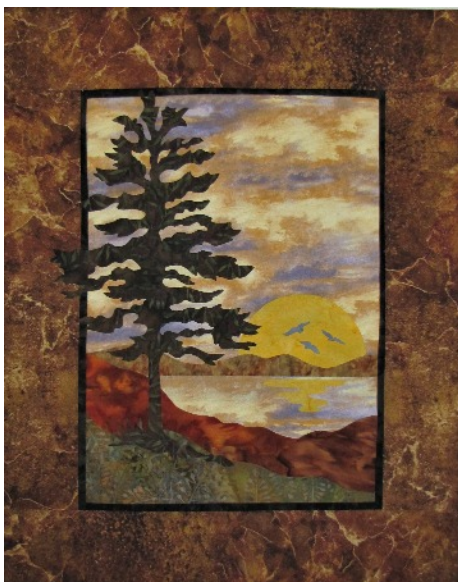
Finished size 11" x 15"

Skill Level: Confident beginner

In this informative hands-on technique class you will learn the fundamentals of raw edge applique; how to use iron-on adhesives; and tools for success. Doris will demonstrate methods of completing and displaying your landscape with handouts to take home. You will complete "Sunset Pine" in your choice of Autumn or Spring colorations.

### Sunset Pine - Raw Edge Applique Landscape/Fused Borders

**5 hours/\$35 kit**



Mounted on 16" x 20" artist canvas

Skill level: Confident beginner

In this hands-on technique class you will add fused borders to your completed raw edge applique landscape. Several methods of completing and displaying your landscape will be presented with handouts to take home. You will complete "Sunset Pine" with fused borders in your choice of Autumn or Spring colorations.

## FUSED RAW EDGE APPLIQUE LANDSCAPE

- \* NO SEWING MACHINES REQUIRED!
- \* Each participant must purchase a kit. Supply lists are available.
- \* Kits include pattern, handouts, fabric, iron-on adhesive and use of art materials.

### "In the Birches/Aspen" Fused Raw Edge Applique

3 hours / \$30 kit



Finished size 12" x 16"

"Autumn Chickadee"

"Winter Cardinal"

Skill Level: Confident beginner to advanced

In this informative hands-on technique class you will learn the fundamentals of fused raw edge applique; how to use iron-on adhesives; and tools for success. Ever wonder how to add dimension to birch/aspen trees? Learn how to use Copic markers to add amazing realistic birch/aspen shading. Doris will demonstrate methods of completing and displaying your landscape. Complete "In the Birches" in your choice of Autumn or Winter.

### "In the Birches/Aspen" Raw Edge Applique/Fused Borders

5 hours / \$35 kit



"Autumn Chickadee"

Mounted on 16" x 20" artist canvas



"Winter Cardinal"

Skill Level: Confident beginner to advanced

In this hands-on technique class in addition to learning the fundamentals of fused raw edge applique you will learn how to use Copic markers to add amazing realistic birch/aspen shading. Then, complete your landscape with fused borders. Doris will demonstrate several methods of displaying your landscape along with handouts to take home. Choose Autumn or Spring colorations.



Doris Deutmeyer - Instructor



## FUSED RAW EDGE APPLIQUE LANDSCAPE

- \* NO SEWING MACHINES REQUIRED!
- \* Each participant must purchase a kit. Supply lists will be available.
- \* Kits include pattern, handouts, fabric, iron-on adhesive and use of art materials.

**"October Woods" - Fused Raw Edge Applique/Fused Borders      5 hours/\$45 kit**



Select your favorite  
background fabric from  
Autumn inspired batiks

Mounted on 20" x 24" artist canvas

Skill level: Confident beginner to advanced

Create a "One of a kind" woodland landscape with choice of Autumn inspired batik backgrounds. In this technique class you will learn the fundamentals of raw edge applique; how to use iron-on adhesives; and tools for success. Learn how to use Copic markers to add stunning realistic birch/aspen shading. You will then complete your landscape with fused borders. Choose the correct adhesive for no sew or quilt as desired. Doris will demonstrate several methods of displaying your landscape with handouts to take home.

**Doris Deutmeyer - Instructor**



**Fabrications**

by

**Doris**

## **FUSED RAW EDGE APPLIQUE LANDSCAPE**

- \* **NO SEWING MACHINES REQUIRED!**
- \* Each participant must purchase a kit. Supply lists will be available.
- \* Kits include pattern, handouts, fabric, iron-on adhesive and use of art materials.

**NEW!**

**Picture This! Photo to Fabric**

**5 hours - \$30/kit**



**Skill Level: Moderate to advanced**

Learn how to create an original applique' pictorial quilt from a photo. Doris will give you tips on taking a good photo, composition, and fabric selection. Use Doris' "Cornflower Garden" photo to learn how to edit your photo and enlarge your designs to develop your own pattern. Use fused raw edge applique technique and iron-on adhesives to make your own fused raw edge applique landscape during class.



Fabrications

by

Doris

## LECTURES / TRUNK SHOW

LARGE group lectures - SLIDE SHOW / TRUNK SHOW presentation.

Please allow one hour. Small store will also be available.

### 1. Spirit of Country Life Stitched in Fabric

Being open to new methods and materials brings the "craft" of quilting to the "art" of fiber work. Follow Doris' sometimes humorous journey to develop her own artistic style and career in art. From elementary art teacher and farm partner to giving workshops and designing patterns for quilters; Doris' mission has always been to share her passion for art, fiber and the spirit of country life.

### 2. Exploring Fiber Art With Doris

Are you ready to try something new? Do you have a favorite photo from a vacation or special place you would like to recreate in fabric; but don't know where to begin? Do you love traditional block piecing and quilting but have limited space to display your work? In this presentation learn about creative methods of making fabric landscapes as well as how to mount and display small works of fiber art. Join Doris as she shares inspiration, information and techniques.