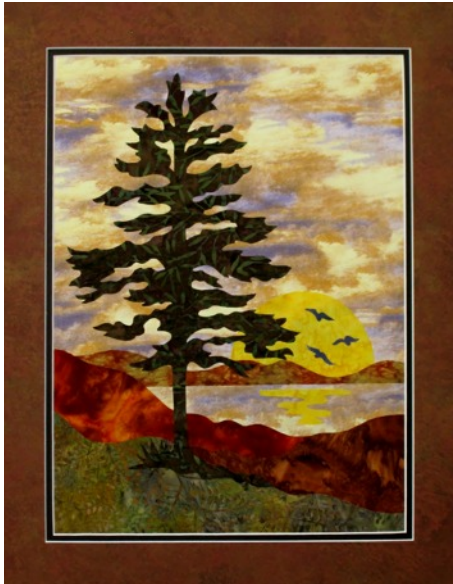


# "Sunset Pine"

## Introduction to Raw Edge Applique Landscapes - 3 hours

Doris Deutmeyer - Instructor - Fabrications by Doris



### SUNSET PINE

Completed size 11" x 15"

All levels

In this informative hands-on class you will learn the fundamentals of raw edge applique; how to use fusibles; and tools for success. Doris will demonstrate methods on how to display your landscape. You will complete "Sunset Pine" in your choice of Autumn or Spring.

**Kit \$28** (Each participant must purchase a kit)

Kit Includes: Pattern, handouts, all fabric, and fusible to complete one 11" x 15" landscape.

### **Supplies to Bring**

**(NO sewing machine required)**

- \* Heat resistant, transparent pressing sheet  
13" x 17" Applique Pressing Sheet™ Bear Creek (recommended)
- \* Small fabric scissors - Fiskars 5" Spring Assist Micro-tip (recommended)
- \* Regular fabric scissors and paper scissors
- \* Notebook and pencil
- \* Small bag for scraps
- \* Camera or cell phone to take photos

**NOTE:** I will have these notions available for purchase during workshop.

13" x 17" Applique Pressing Sheet \$16

Fiskars Micro tip scissors \$15 workshop price (reg \$17)

### **Room Set Up**

Instructor will need 2 tables for demonstrations, sales and samples,  
Participants will need ample space; no more than 2 participants per 8' table

**One iron station per 3 - 4 participants** - full size irons PLEASE: NO travel irons, NO steam

**Two cutting stations** with 18" X 24" rotary mat, ruler and rotary cutter